



ACCOMMODATIONS SYMBOL LEGEND

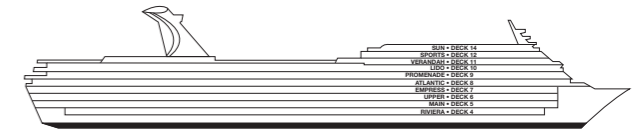
- ★ 2 Twin Beds (convert to King) and Single Sofa Bed
- 2 Twin Beds (convert to King) and 1 Upper Pullman
- 2 Twin Beds (convert to King) and 2 Upper Pullmans
- † 2 Twin Beds (convert to King) and Double Sofa Bed
- ◆ Stateroom with 2 Porthole Windows
- < Connecting staterooms (ideal for families and groups of friends)

- 8A 8B 8C 8D Balcony Staterooms: Beds do not convert to King when both Upper Pullmans in use.
- 6S Grand Suites with Single Armchair Bed instead of Single Sofa Bed: U74.
- Effective December 1, 2011, all accommodations will be non-smoking.

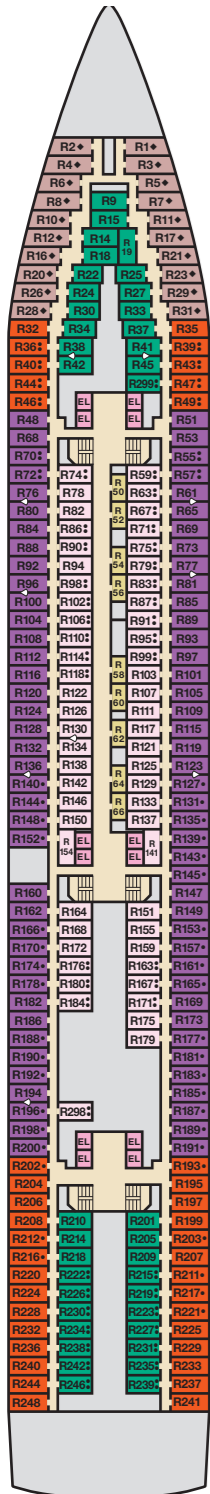
Staterooms are available that are modified for wheelchair users. Please contact Carnival Reservations Department, Guest Access Services, at 1-800-438-6744, ext. 70025, for details.

CATEGORIES

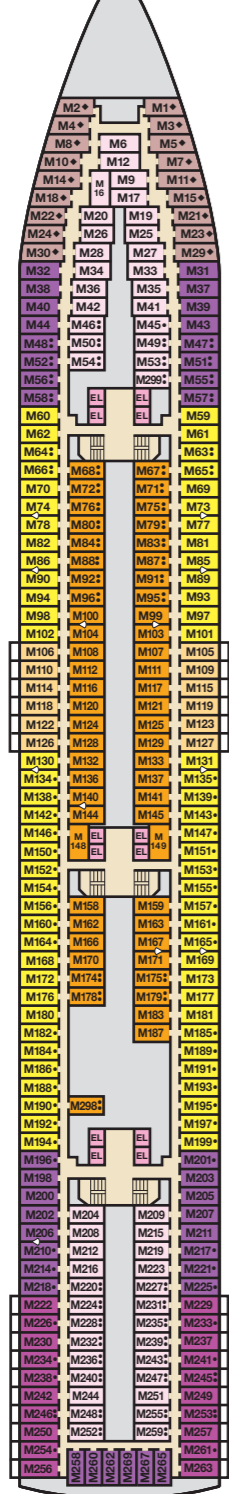
- 1A Interior Upper/Lower
- PT Porthole
- 4A 4B 4C 4D 4E 4I Interior
- 6A 6B 6C 6D 6E Ocean View
- 8A 8B 8C 8D Balcony
- 8M Aft-View Extended Balcony
- 0B Junior Suite (obstructed views)
- J Junior Suite
- GS Grand Suite
- ES Extended Balcony Grand Suite



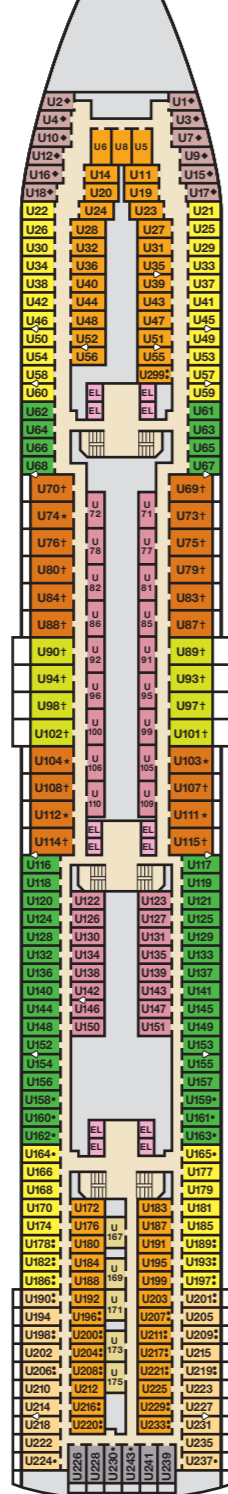
Gross Tonnage: 70,367 Length: 855 Feet Beam: 103 Feet
Cruising Speed: 21 Knots Guest Capacity: 2,052 (Double Occupancy)
Total Staff: 920 Registry: The Bahamas



Riviera • Deck 4



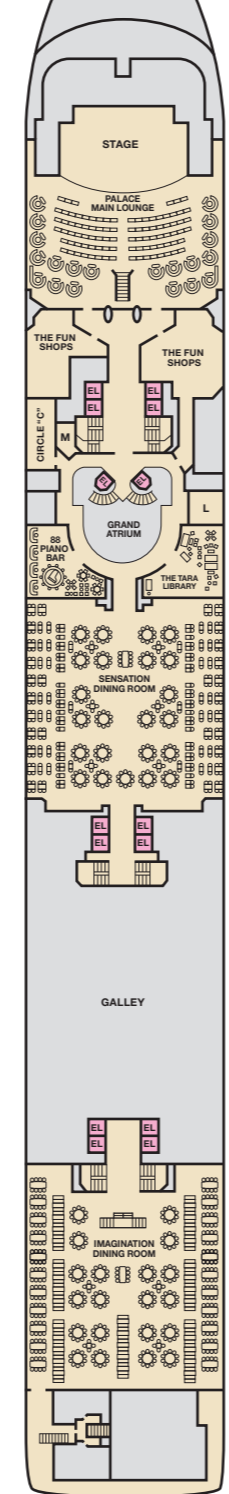
Main • Deck 5



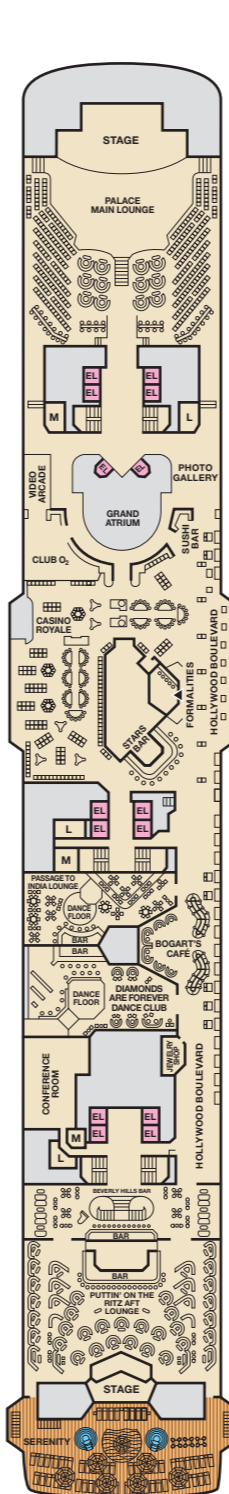
Upper • Deck 6



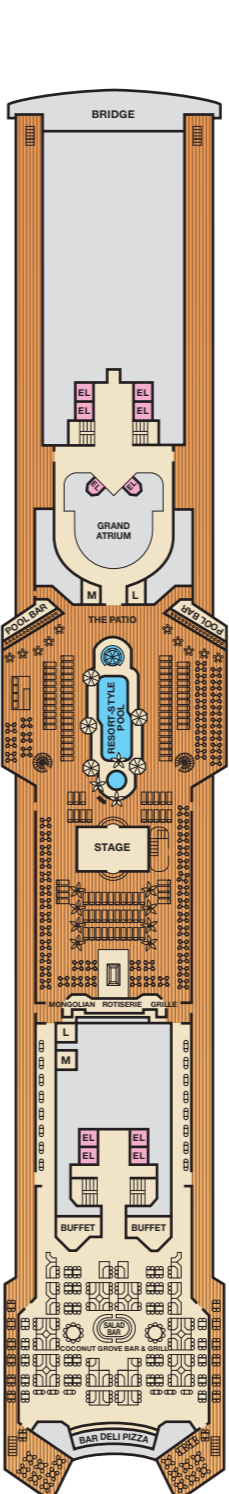
Empress • Deck 7



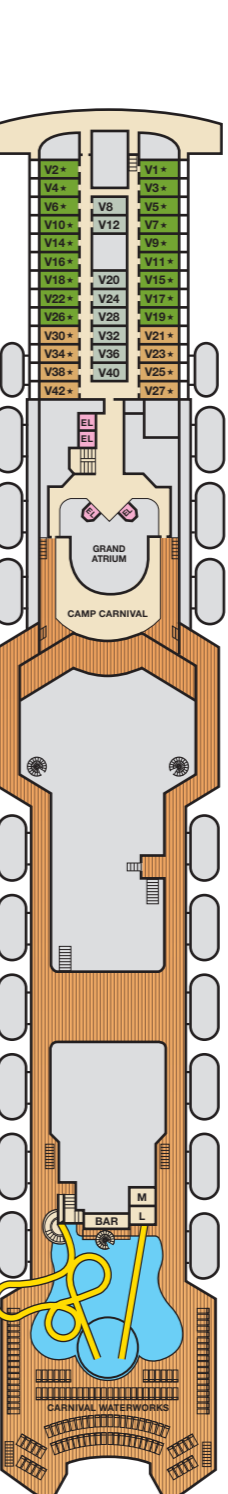
Atlantic • Deck 8



Promenade • Deck 9



Lido • Deck 10



Verandah • Deck 11



Aft Sports • Deck 12



Sun • Deck 14